

Triple Bottom Line Framework



Equity



Economy



Environment



What We've Heard

Themes From Outreach & Engagement



Outreach & Engagement



ENSURE ACCESS
AND OPPORTUNITY
FOR ALL RESIDENTS



PROVIDE HOUSING
OPTIONS FOR ALL
INCOMES AND LIFE STAGES



CREATE COMPLETE
COMMUNITIES



INVEST IN
EXISTING COMMUNITIES



SUPPORT SAFE
AND CONVENIENT
TRANSPORTATION OPTIONS

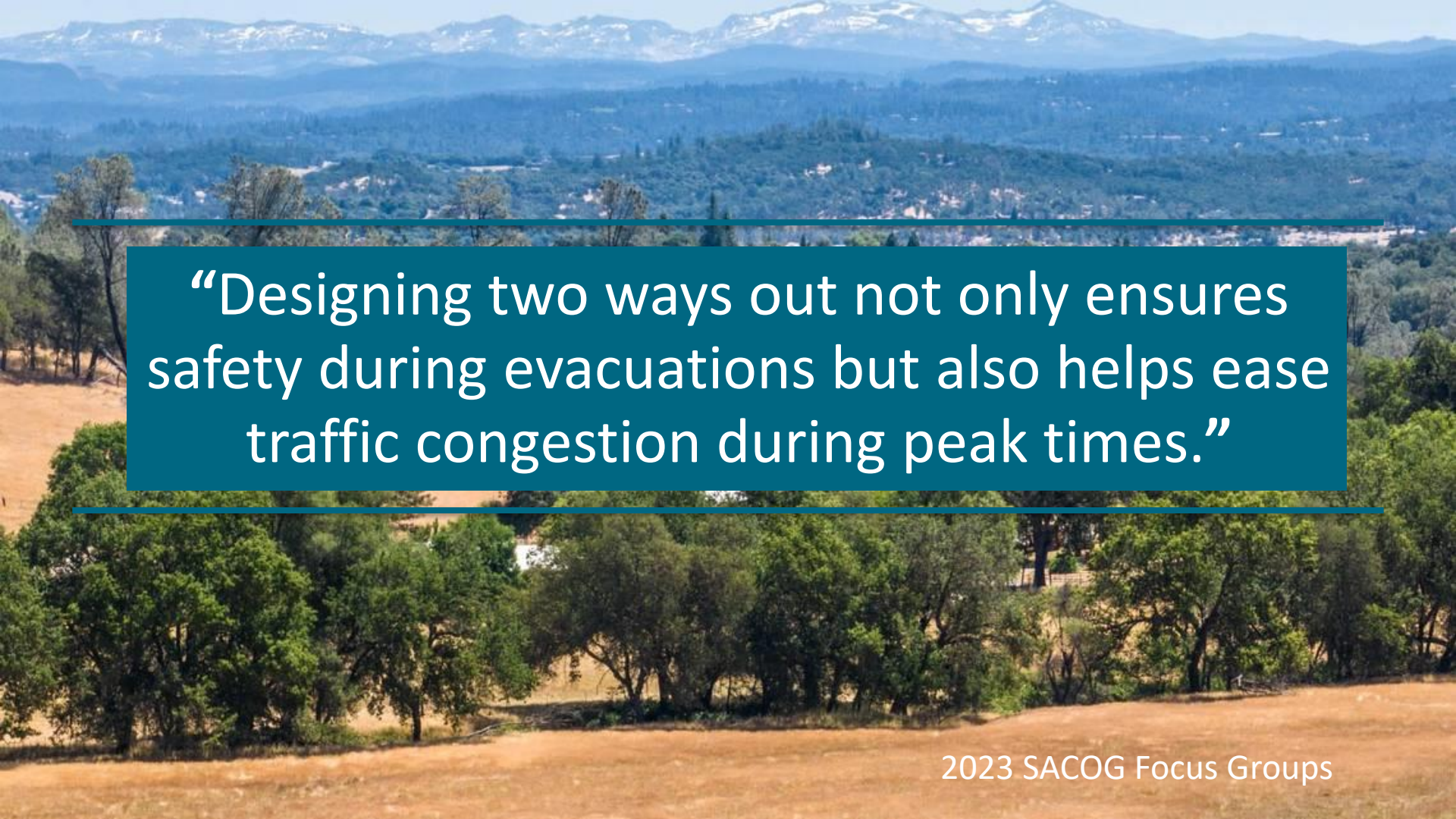


PREPARE FOR NATURAL
DISASTERS TO PROTECT
PEOPLE AND PROPERTY



PROTECT AND
CONSERVE OPEN
SPACE AND AGRICULTURE

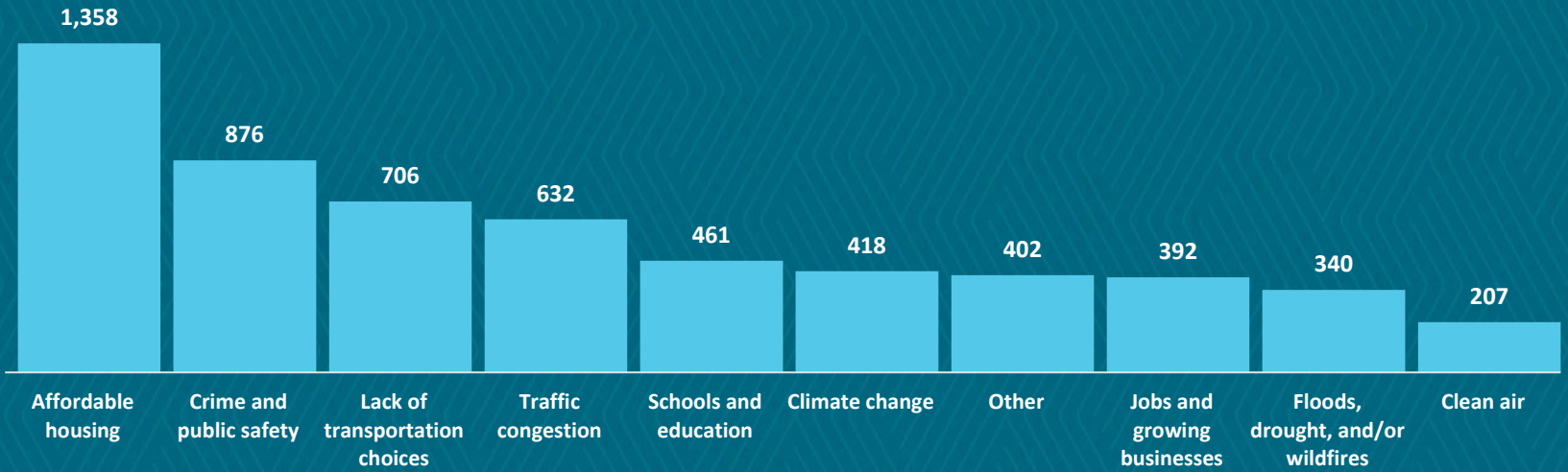




“Designing two ways out not only ensures safety during evacuations but also helps ease traffic congestion during peak times.”

Provide Housing Options for all Incomes and Life Stages

What are the biggest challenges your community is facing?

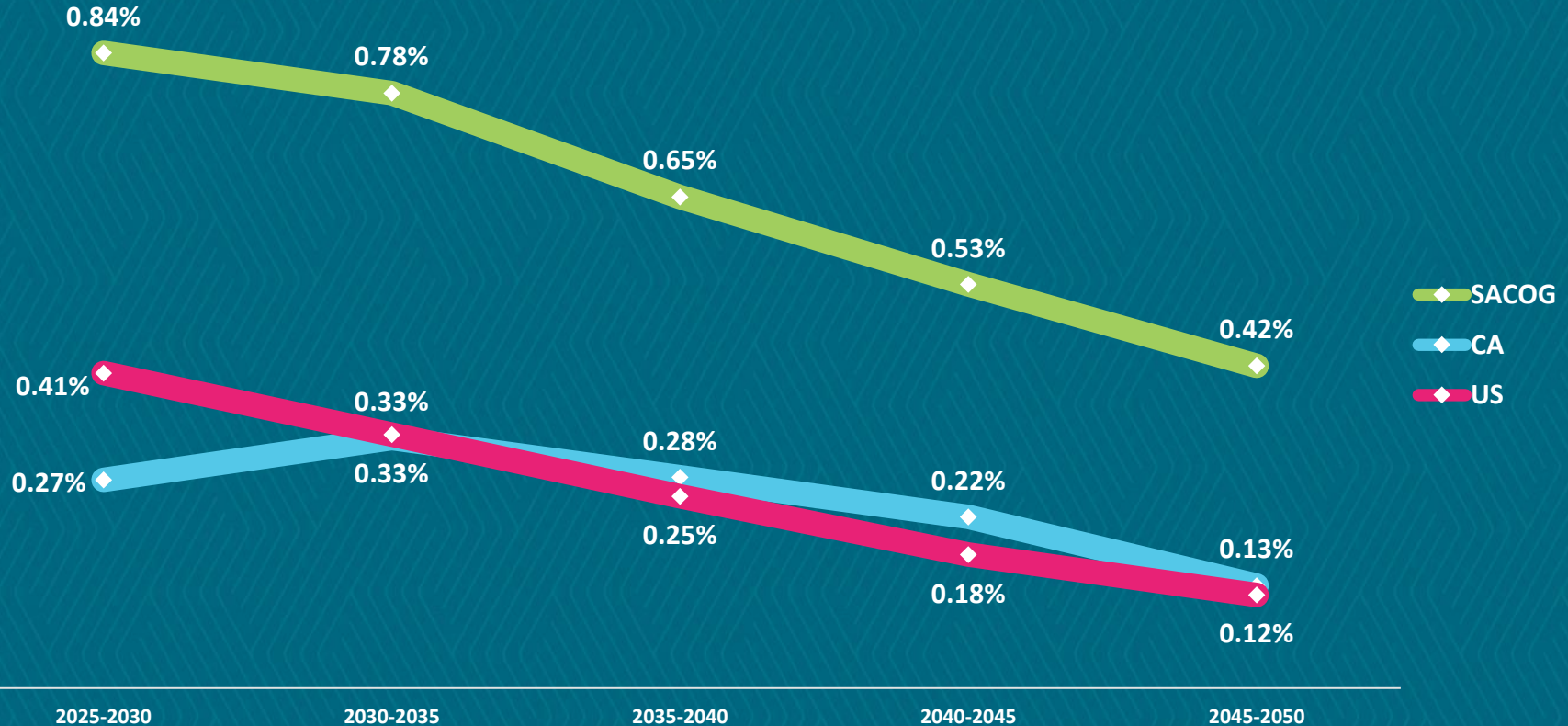




What We've Learned

Technical Analysis

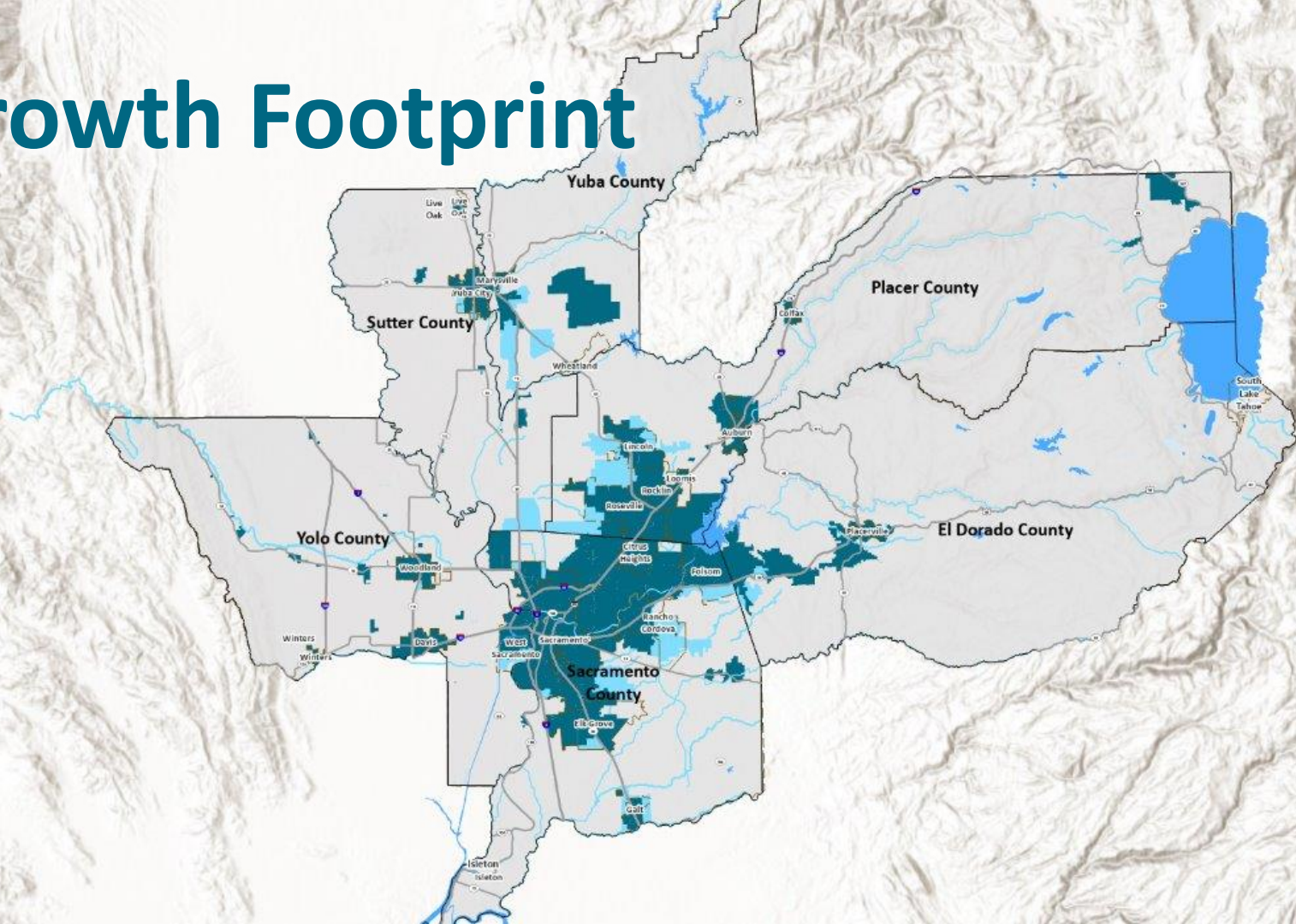
Average Annual Population Growth



Growth Forecast

	Region		Placerville	
	2020	Change, '20-'50	2020	Change, '20-'50
Population	2,500,000	+600,000	10,000	+900
Jobs	1,170,000	+260,000	10,900	+900
Housing Units	945,000	+278,000	4,700	+500

Growth Footprint





Where We're Going

Transportation and Regional Programs

Blueprint in Placerville



Transportation



Addressing Transportation Challenges

- Plan for and be **resilient** to wildfires
- Prioritize lower cost and **quicker** projects
- **Technology** solutions to maximize existing capacity
- Prioritize **maintenance and repair**

BOARD



Implementation Strategy Discussions



Release Blueprint and EIR for Public Review



Review Final Draft Plan



Plan Adoption and Certification of the EIR



STAFF



Drafting of Blueprint Plan and EIR documents continued



Blueprint and EIR public review period



Response to public comments



Submission of Blueprint to State and Federal Regulators

Submission of SCS to California Air Resources Board

2025



- ★ **City of Marysville**
Marysville Chinese Community Inc.
- ★ **City of Woodland**
New Hope Community Dev. Corp.
- ★ **City of Sacramento**
Food Literacy Center
- ★ **Sutter & Yuba Counties**
Yuba-Sutter Economic Development Corporation
- ★ **City of Roseville**
Health Education Council
- ★ **City of Sacramento**
Mutual Assistance Network * GNNA, CLTR, GSUL
- ★ **Sacramento County**
Mutual Assistance Network
- ★ **Yolo County**
RISE Inc. & Health Education
- ★ **El Dorado County**
El Dorado Community Foundation
- ★ **Latino Leadership Council**
- ★ **United Way**

Ready, Set,
TRAILS!
VISION FOR A CONNECTED
SACRAMENTO REGION

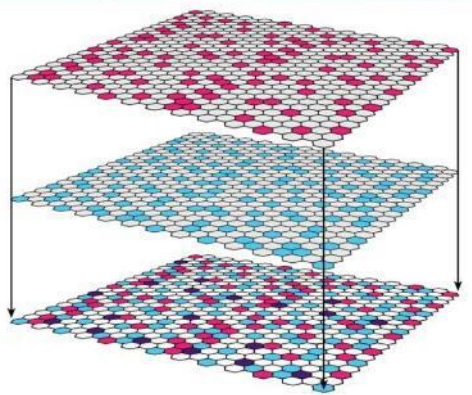


MOBILITY ZONES

Areas with equity needs

Areas with transportation needs and opportunities

Areas that could be a Mobility Zone



Time for Teamwork



Time for Teamwork





BLUEPRINT